

# How Land Grabbing Affects Socioeconomic Inequality

## The Kenyan Case



### What is it?

**Land grabs** describe the "transfer of control over property and resources [...] from **local control to more powerful outsiders**" (Holmes, 2014, p. 550)



### Mixed-Method approach:

1. Quantitative analysis aims to establish a **correlation between land grabbing and land inequality**
2. **Process Tracing** from land grabs to socioeconomic inequalities

### Our Objective

- Establish the link between land grabbing by foreign actors & socioeconomic inequality
- In-depth study of the Kenyan case that takes into account the **legal and historic context**

### Why study this?

The number of people relying on land is ever-growing and land inequality is **one of the main factors blocking sustainable development** (Anseeuw & Baldinelli, 2020).

### Our Process

### Land Grabs

- Government policy favours foreign investment
- Causes displacements, blockage of migration routes, environmental damage, legal disputes
- Our analysis shows: **Every 1000 ha of land grabbed is related to ~0.5 % increase in land inequality**

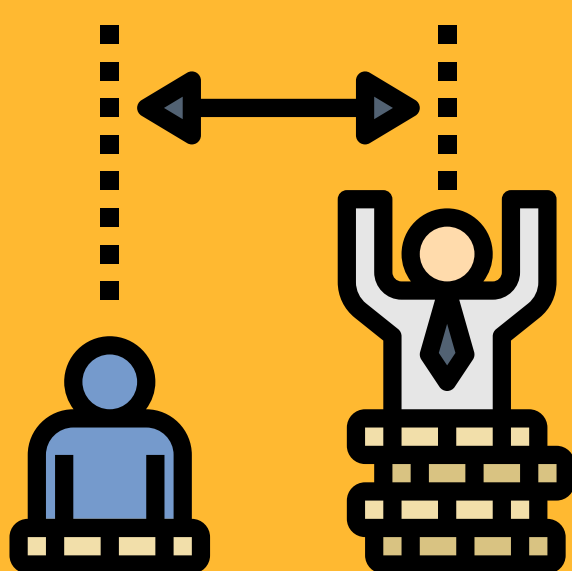
### Land Inequality

- Land and its distribution are historically politicized issues and a reoccurring source of conflict and instability in Kenya (Nolte & Vāth, 2015)
- A legally unclear situation results in tenure insecurity and fails to satisfy the local community's claim on land
- Land grabs make for an **increasingly uneven distribution of land** between foreign actors, local elites, and small landholders



### Socioeconomic Inequality

- Loss of land and shrinking land holdings are **key reasons for poverty and income inequality** in Kenya (Syagga, 2006)
- Foreign investments fails to fulfill promises for job opportunities as a compensation
- Loss of land results in **lack of capacity to build local resilience** against the detrimental effects of climate change



#### Sources

- Anseeuw, W. & Baldinelli, G. M. (2020). Uneven ground. *International Land Coalition*.
- Syagga, P. M. (2006). Land ownership and use in Kenya: Policy prescriptions from an inequality perspective. *Readings on Inequality in Kenya. Sectoral Dynamics and Perspectives*, Nairobi, 289-344.
- Wegerif, M. C., & Guereña, A. (2020). Land inequality trends and drivers. *Land*, 9(4), 101.
- Nolte, K. & Vāth, S.J., (2015). Interplay of land governance and large-scale agricultural investment: evidence from Ghana and Kenya. *The Journal of Modern African Studies*, 69-92.
- Schoneveld, George, Zoomers, Annelies. 2015. Natural resource privatisation in Sub-Saharan Africa and the challenges for inclusive green growth, *International Development Planning Review* (2015), 37, (1), 95-118. DOI <https://doi.org/10.3828/idpr.2015.10>
- Holmes, G. (2014). What is a Land Grab? Exploring Green Grabs, Conservation, and Private Protected Areas in Southern Chile. *Journal of Peasant Studies*, 41(4), 547-567.