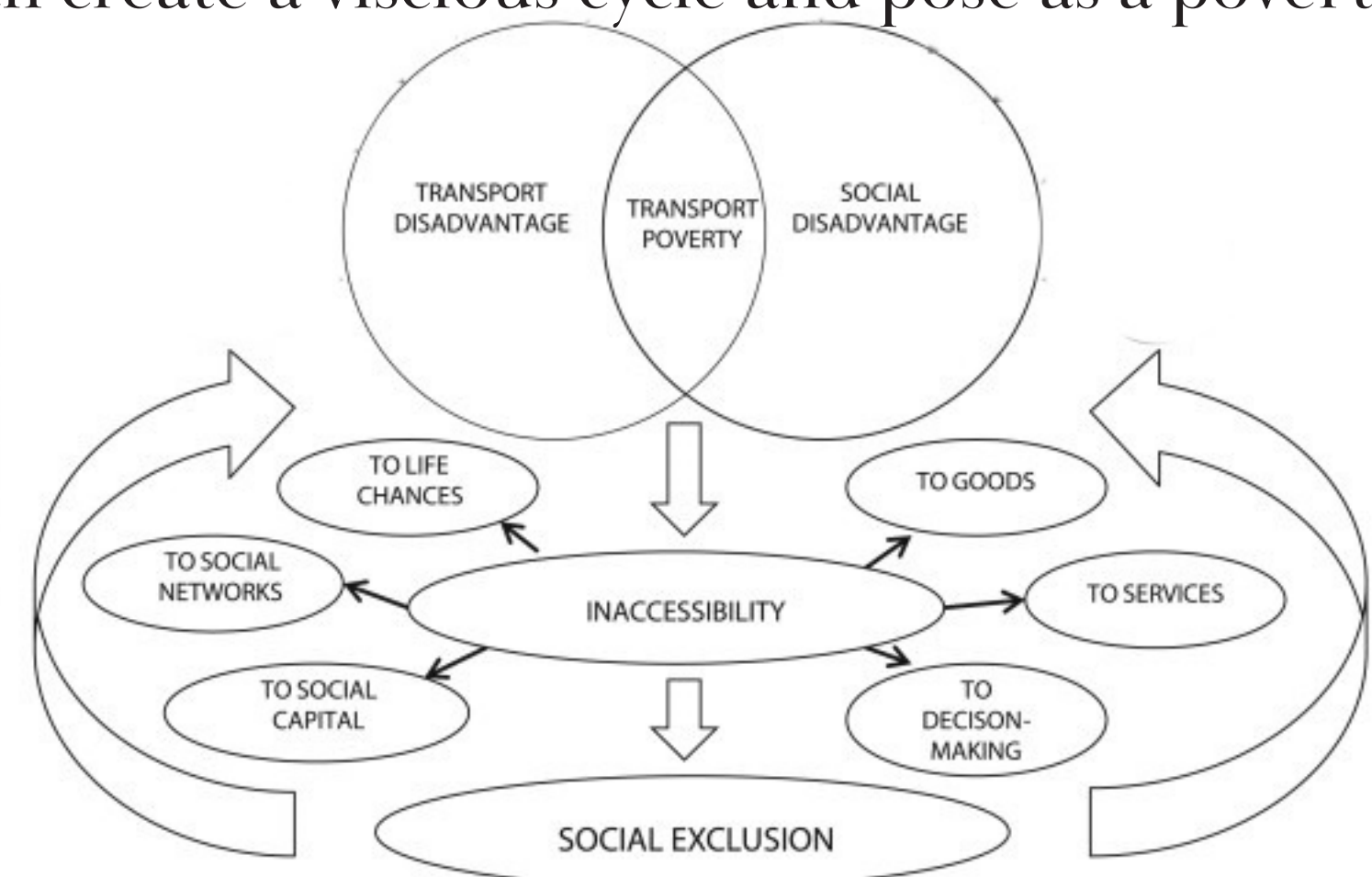
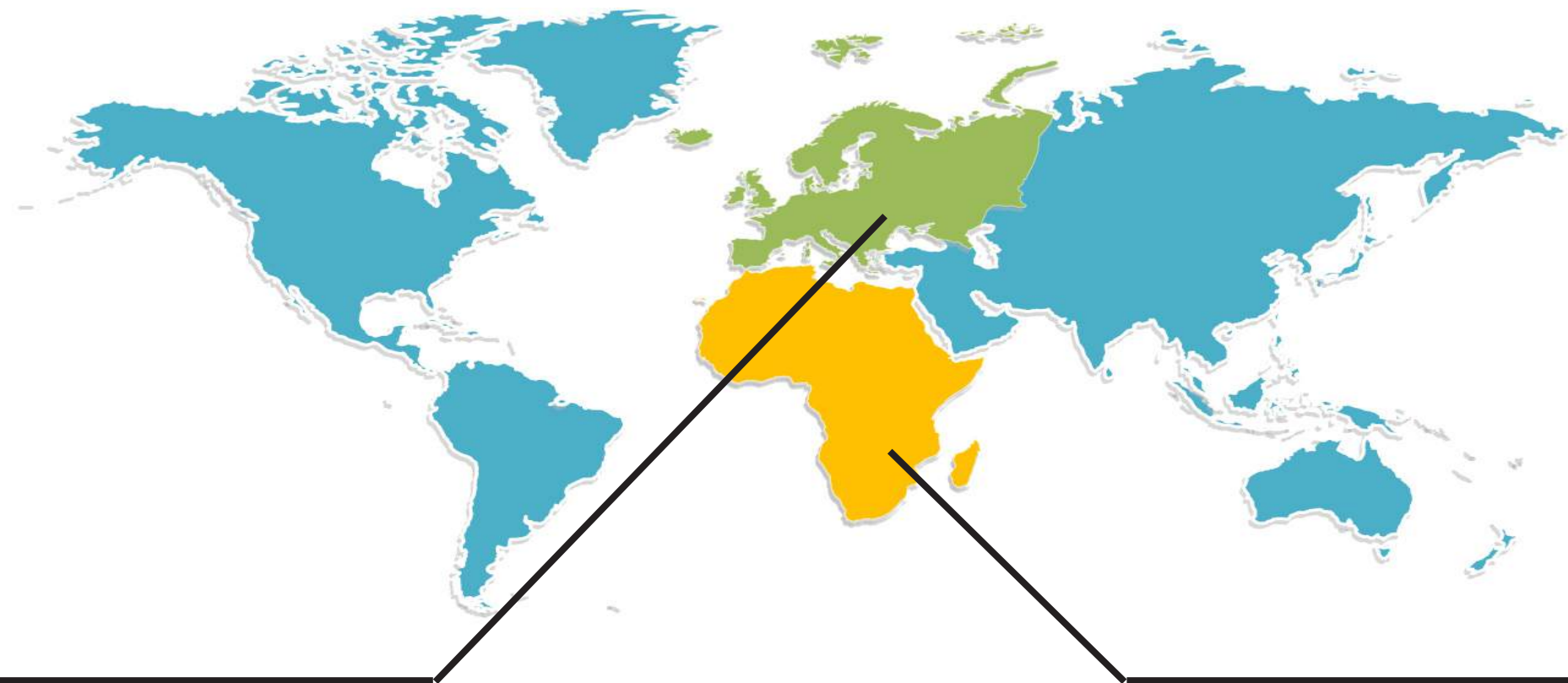
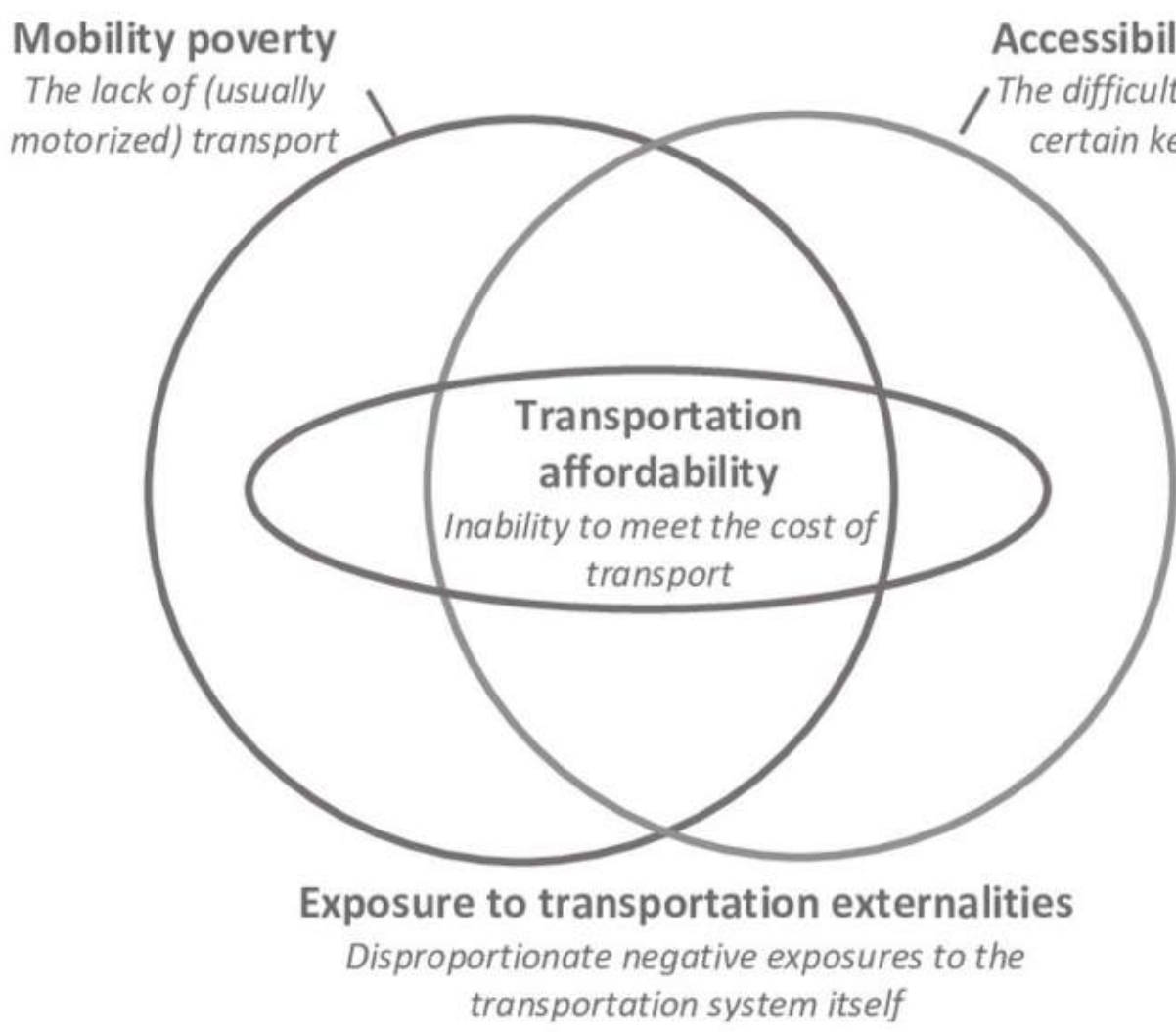


Transport Poverty as a Challenge of Urbanisation: Causes and Consequences in Europe and Africa

Transport poverty is the inability to fulfil one's daily activity needs due to limitations in the use transport.

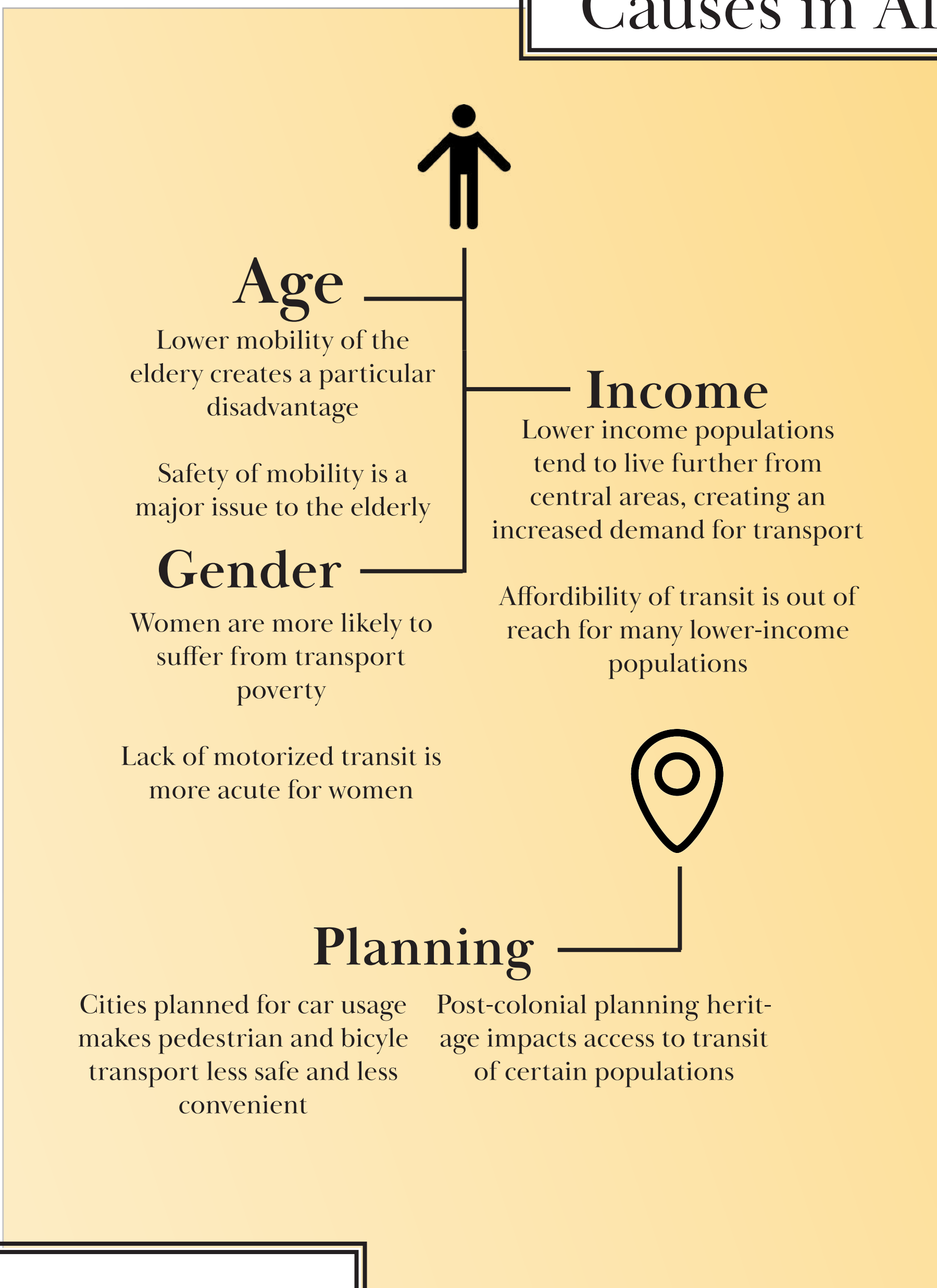
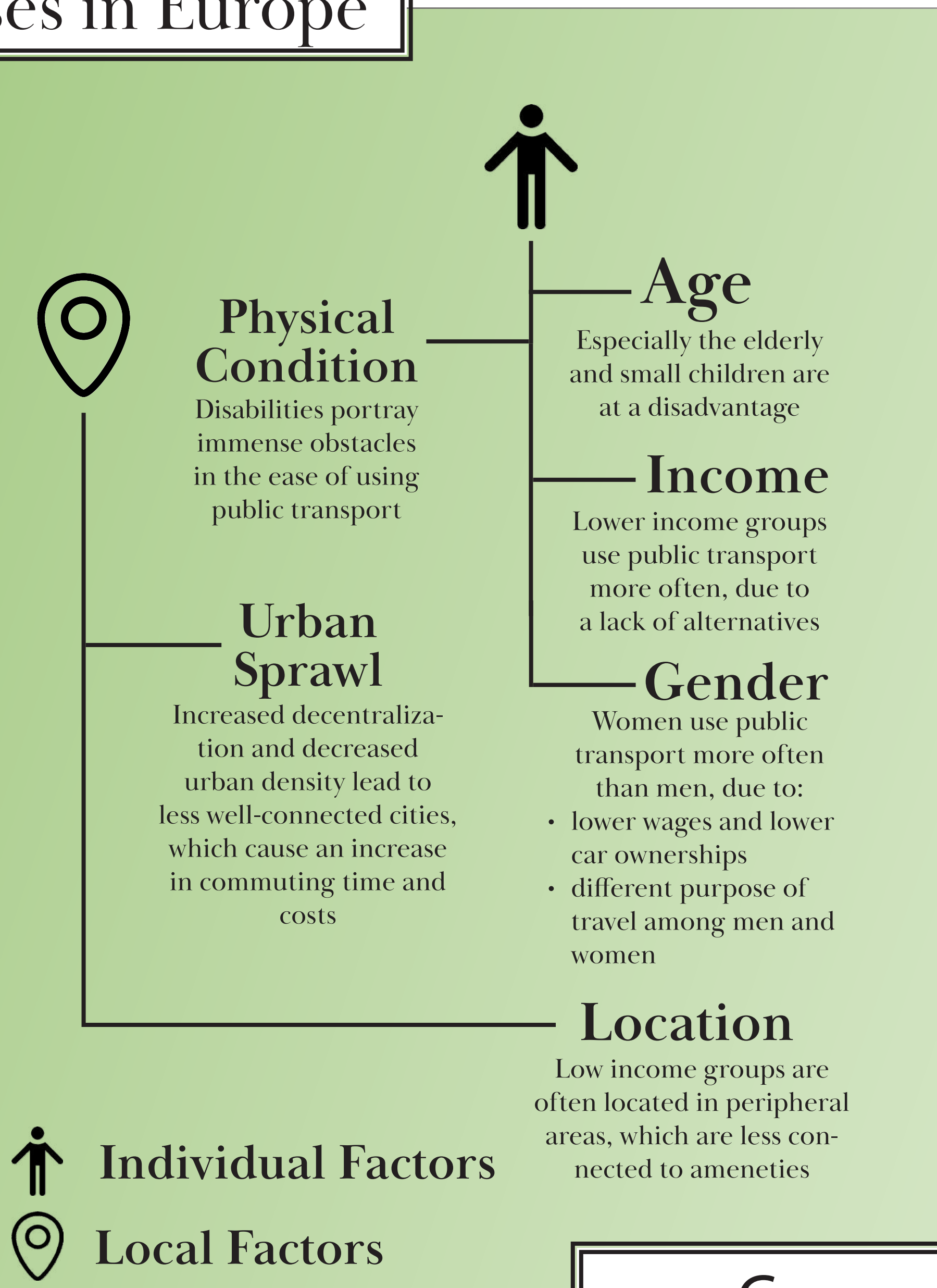
It is a **worldwide** observable phenomenon in urban areas, affecting millions of individuals in the developed and developing world alike. For that reason, we chose to analyse Europe and Africa.

Its main **social consequence** is social exclusion caused by the inaccessibility of amenities. This can create a vicious cycle and pose as a poverty trap.

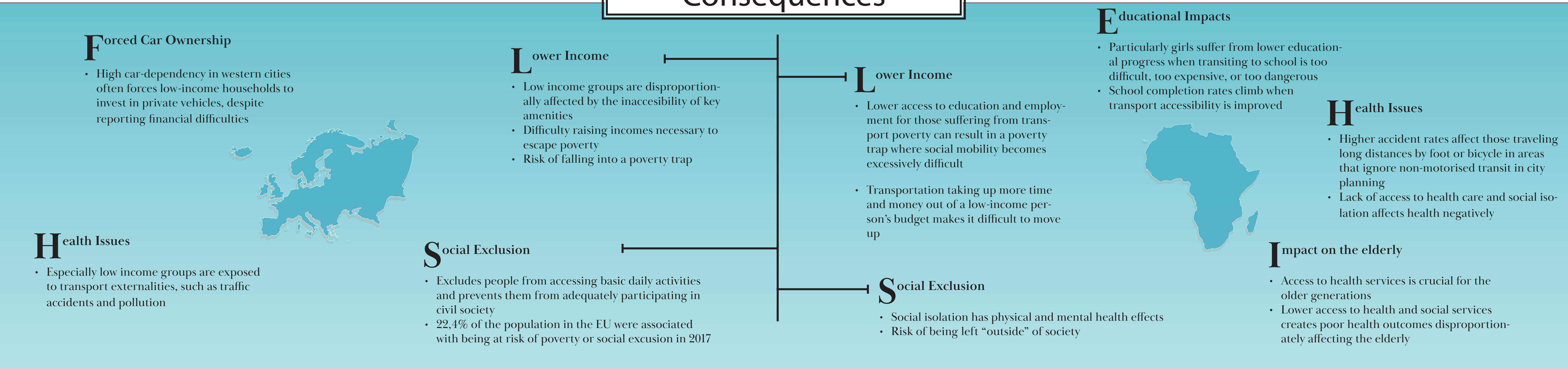


Causes in Europe

Causes in Africa



Consequences



Conclusion

From our analysis, it appears that both the causes and consequences of transport poverty show marked similarities between Europe and Africa. Age, gender and income constitute important individual risk factors for transport poverty on both continents. By limiting the access to key life-enhancing opportunities for those affected, transport poverty aggravates poverty and inequity. Given the extent and severity of its consequences, it is paramount that we address the issue of transport poverty and that we regard it as one of the major challenges posed by global urbanisation.